



Offshore Structural Steel Stock Program





Our Mission

To offer the best value by providing quality offshore structural products with the most competitive prices in the shortest lead time.

Our Stock Program

High Yield Seamless Pipes

- API 5L X52/L360 PSL 2
- EN 10225 G15
- Norsok M-120 Y22

High Yield Seamless Pipes

- API 5L X65/L450 PSL 2

High Yield SAW Welded Pipes

- API 5L X52/L360 PSL 2
- API 5L X56/L390 PSL 2
- API 5L X65/450 PSL 2

High Yield Offshore Plates

- API 2W Gr 50/Gr 60
- API 2H Gr 50
- EN 10225 S355 G10+M
- EN 10225 S420 G2+M
- EN 10225 S460 G2+M
- Norsok M-120 Y20/Y30/Y40

High Yield Offshore Sections

- EN 10225 S355 G11+M
- EN 10025 S355ML
- Norsok M-120 Y26



High Yield Seamless Pipes

(API 5L X52/L360 PSL 2, EN 10225 G15, Norsok Y22)

Size (inch)	Schedule	Diameter (mm)	Wall Thickness (mm)	Wall Thickness (in)	Length (mm)	Unit Weight (kg/mtr)	Weight/Piece (MT)
3	STD / 40	88.9	5.49	0.216	12000	11.29	0.136
	XS / 80	88.9	7.62	0.300	12000	15.28	0.183
4	STD / 40	114.3	6.02	0.237	12000	16.08	0.193
		114.3	6.35	0.250	12000	16.91	0.203
		114.3	7.92	0.312	12000	20.78	0.249
	XS / 80	114.3	8.56	0.337	12000	22.32	0.268
	XXS	114.3	17.12	0.674	12000	41.04	0.492
5		141.3	6.30	0.248	12000	20.98	0.252
	STD / 40	141.3	6.55	0.258	12000	21.77	0.261
	XS / 80	141.3	9.53	0.375	12000	30.97	0.372
	120	141.3	12.70	0.500	12000	40.28	0.483
	XXS	141.3	19.10	0.752	12000	57.57	0.691
6	STD / 40	168.3	7.11	0.280	12000	28.27	0.339
		168.3	8.20	0.323	12000	32.38	0.389
		168.3	9.53	0.375	12000	37.32	0.448
	XS / 80	168.3	10.97	0.432	12000	42.57	0.511
		168.3	12.70	0.500	12000	48.74	0.585
	120	168.3	14.27	0.562	12000	54.21	0.651
	160	168.3	18.26	0.718	12000	67.57	0.811
	XXS	168.3	21.95	0.864	12000	79.23	0.951
8	STD / 40	219.1	8.18	0.322	12000	42.55	0.511
	STD / 40	219.1	8.20	0.323	12000	42.65	0.512
		219.1	9.53	0.375	12000	49.26	0.591
	60	219.1	10.31	0.406	12000	53.09	0.637
	XS / 80	219.1	12.70	0.500	12000	64.65	0.776
		219.1	15.90	0.626	12000	79.69	0.956
	120	219.1	18.26	0.719	12000	90.45	1.085
		219.1	19.10	0.752	12000	94.22	1.131
	140	219.1	20.62	0.812	12000	100.94	1.211
	XXS	219.1	22.23	0.875	12000	107.94	1.295
10	160	219.1	23.01	0.906	12000	111.29	1.335
		219.1	25.40	1.000	12000	121.35	1.456
	STD / 40	273.1	9.27	0.365	12000	60.32	0.724
	STD / 40	273.1	9.30	0.366	12000	60.51	0.726
		273.1	9.53	0.375	12000	61.95	0.743
	XS / 60	273.1	12.70	0.500	12000	81.57	0.979
		273.1	15.90	0.626	12000	100.87	1.210
	100	273.1	18.26	0.719	12000	114.77	1.377
		273.1	19.10	0.752	12000	119.66	1.436
	120	273.1	21.44	0.844	12000	133.08	1.597
12		273.1	22.23	0.875	12000	137.55	1.651
	140 / XXS	273.1	25.40	1.000	12000	155.18	1.862
	160	273.1	28.58	1.125	6000	172.37	1.034
	STD	323.9	9.53	0.375	12000	73.89	0.887
	XS	323.9	12.70	0.500	12000	97.48	1.170
	60	323.9	14.27	0.560	12000	108.98	1.308
		323.9	15.90	0.626	12000	120.79	1.449

High Yield Seamless Pipes

(API 5L X52/L360 PSL 2, EN 10225 G15, Norsok Y22)

Size (inch)	Schedule	Diameter (mm)	Wall Thickness (mm)	Wall Thickness (in)	Length (mm)	Unit/Weight (kg/mtr)	Weight/Piece (MT)
12	80	323.9	17.48	0.688	12000	132.11	1.585
		323.9	19.10	0.752	12000	143.59	1.723
	100	323.9	21.44	0.844	12000	159.94	1.919
	120 /XXS	323.9	25.40	1.000	12000	187.01	2.244
14	160	323.9	33.32	1.312	6000	238.81	1.433
	STD / 30	355.6	9.53	0.375	12000	81.35	0.976
	XS	355.6	12.70	0.500	12000	107.41	1.289
		355.6	15.90	0.626	12000	133.22	1.599
	80	355.6	19.10	0.752	12000	158.52	1.902
	100	355.6	23.83	0.938	12000	195.00	2.340
16		355.6	25.40	1.000	12000	206.86	2.482
		355.6	38.10	1.500	6000	298.36	1.790
	STD / 30	406.4	9.53	0.375	12000	93.29	1.119
	XS / 40	406.4	12.70	0.500	12000	123.32	1.480
		406.4	15.90	0.626	12000	153.14	1.838
	60	406.4	16.66	0.656	12000	160.15	1.922
		406.4	19.10	0.752	12000	182.46	2.189
	80	406.4	21.44	0.844	12000	203.57	2.443
18		406.4	25.40	1.000	12000	238.69	2.864
	100	406.4	26.19	1.031	12000	245.60	2.947
	XS	457.2	12.70	0.500	12000	139.24	1.671
	60	457.2	19.10	0.752	8000	206.39	2.477
20		457.2	25.40	1.000	7000	270.52	3.246
	XS/ 30	508.0	12.70	0.500	12000	155.15	1.862
		508.0	25.40	1.000	12000	302.34	3.628

Supply Condition

Origin	ArcelorMittal Tubular Products Roman (Romania) & Ostrava (Czech Republic)	ArcelorMittal Tubular Products Jubail (Saudi Arabia)	Nippon Steel & Sumitomo Metal Corporation (Japan)	HengYang Valin Steel Tube Co. (China)
Specification:	APL 5L X52/L360 PSL 2 EN 10225 S355 G15 Norsok Y22	API 5L X52/L360 PSL 2	API 5L X52/L360 PSL 2	API 5L X52/L360 PSL 2
Certificate:	Roman: EN10204, 3.2 (ABS) Ostrava: EN 10204, 3.2 (LRS)	EN10204, 3.2 (ABS)	EN10204, 3.2 (ABS)	EN10204, 3.2 (ABS)
Charpy Value:	Min 27J at -50°C (T) Min 50J at -50°C (L)	Min 34J at -40°C (T)	Min 34J at -50°C (T)	Min 34J at -40°C (T)
Heat Treatment:	Normalized	Normalized	Q & T	Normalized / Q & T
Length:	7000mm - 12000mm	11800mm	12000mm	6000mm, 12000mm



High Yield Seamless Pipes

(API 5L X65/L450 PSL 2)

Size (inch)	Schedule	Diameter (mm)	Wall Thickness (mm)	Wall Thickness (in)	Length (mm)	Unit Weight (kg/mtr)	Weight/Piece (MT)
6	STD/ 40	168.3	7.11	0.280	12000	28.27	0.339
	XS/ 80	168.3	10.97	0.432	12000	42.57	0.511
8		168.3	12.70	0.500	12000	48.74	0.585
	STD/ 40	219.1	8.20	0.323	12000	42.65	0.512
		219.1	9.50	0.374	12000	49.11	0.589
	60	219.1	10.31	0.406	12000	53.09	0.637
	XS/ 80	219.1	12.70	0.500	12000	64.65	0.776
		219.1	15.90	0.626	12000	79.69	0.956
	120	219.1	18.26	0.719	12000	90.45	1.085
		219.1	25.40	1.000	12000	121.35	1.456
10		219.1	34.93	1.375	12000	158.67	1.904
	STD/ 40	273.1	9.30	0.366	12000	60.51	0.726
	XS/ 60	273.1	12.70	0.500	12000	81.57	0.979
		273.1	15.90	0.626	12000	100.87	1.210
	100	273.1	18.26	0.719	12000	114.77	1.377
		273.1	22.23	0.875	12000	137.55	1.651
12	140/XXS	273.1	25.40	1.000	12000	155.18	1.862
	STD	323.9	9.50	0.374	12000	73.67	0.884
	XS	323.9	12.70	0.500	12000	97.48	1.170
		323.9	15.90	0.626	12000	120.79	1.449
	80	323.9	17.48	0.688	12000	132.11	1.585
		323.9	19.10	0.752	12000	143.59	1.723
	100	323.9	21.44	0.844	12000	159.94	1.919
14	120/XXS	323.9	25.40	1.000	12000	187.01	2.244
	STD/ 30	355.6	9.50	0.374	12000	81.10	0.973
	40	355.6	11.13	0.438	12000	94.56	1.135
	XS	355.6	12.70	0.500	12000	107.41	1.289
		355.6	15.90	0.626	12000	133.22	1.599
	80	355.6	19.10	0.752	12000	158.52	1.902
16		355.6	25.40	1.000	12000	206.86	2.482
	STD/ 30	406.4	9.52	0.375	12000	93.19	1.118
	XS/ 40	406.4	12.70	0.500	12000	123.32	1.480
		406.4	15.90	0.626	12000	153.14	1.838
	60	406.4	16.66	0.656	12000	160.15	1.922
		406.4	19.10	0.752	12000	182.46	2.189
	80	406.4	21.44	0.844	12000	203.57	2.443
	406.4	25.40	1.000	12000	238.69	2.864	

Supply Condition

Origin	Nippon Steel & Sumitomo Metal Corporation (Japan)
Specification:	API 5L X65/L450 PSL 2
Certificate:	EN10204 3.2 (ABS)
Charpy Value:	Min 34J at -30°C (T)
Heat Treatment:	Q & T

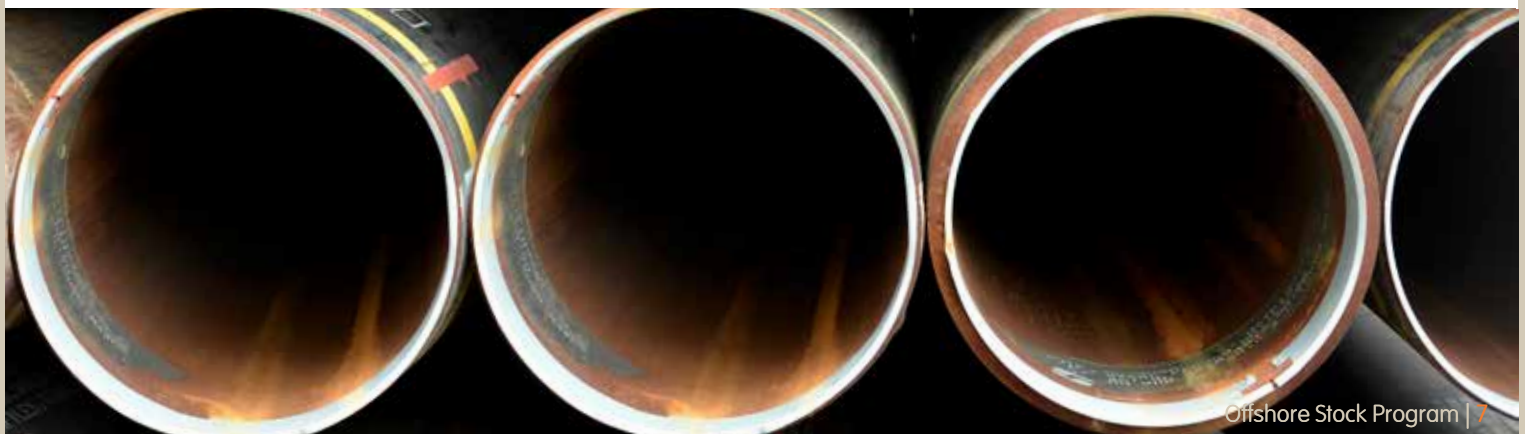
High Yield SAW Welded Pipes

(API 5L X52/L360, X56/L390, X65/L450 PSL 2)

Size (inch)	Schedule	Diameter (mm)	Wall Thickness (mm)	Wall Thickness (in)	Length (mm)	Unit Weight (kg/mtr)	Weight/Piece (MT)
16	XS/ 40	406.4	12.70	0.500	12000	123.32	1.480
		406.4	15.90	0.626	12000	153.14	1.838
	80	406.4	21.44	0.844	12000	203.57	2.443
18	XS	457.2	12.70	0.500	12000	139.24	1.671
		457.2	15.90	0.626	12000	173.06	2.077
	60	457.2	19.10	0.752	12000	206.39	2.477
		457.2	25.40	1.000	12000	270.52	3.246
20	XS/ 30	457.2	31.80	1.252	12000	333.66	4.004
		508.0	12.70	0.500	12000	155.15	1.862
		508.0	15.90	0.626	12000	192.99	2.316
		508.0	19.10	0.752	12000	230.32	2.764
		508.0	25.40	1.000	12000	302.34	3.628
24	XS	508.0	31.80	1.252	12000	373.50	4.482
		610.0	12.70	0.500	12000	187.10	2.245
		610.0	15.90	0.626	12000	232.99	2.796
		610.0	19.10	0.752	12000	278.37	3.340
		610.0	25.40	1.000	12000	366.24	4.395
		610.0	31.80	1.252	12000	453.50	5.442
26		610.0	38.10	1.500	8861	537.43	4.762
		660.0	25.40	1.000	12000	397.57	4.771
28		711.0	19.10	0.752	12000	325.95	3.911
		711.0	25.40	1.000	12000	429.52	5.154
		711.0	31.80	1.252	12000	532.72	6.393
30		762.0	25.40	1.000	12000	461.47	5.538
		762.0	31.80	1.252	12000	572.72	6.873
		762.0	38.10	1.500	12000	680.27	8.163

Supply Condition

Origin	Steel Flower Co. (Korea)	Nippon Steel & Sumitomo Metal Corporation (Japan)	SeAH Steel (Korea)
Specification:	API 5L X52/L360, X65/L450, PSL 2 with supplementary tests	API 5L X52/L360, X56/L390, X65/L450 PSL 2 with supplementary tests	API 5L X52/L360 PSL2 with supplementary tests
Certificate:	EN10204, 3.2 (ABS)	EN10204, 3.2 (ABS)	EN10204, 3.2 (ABS)
Charpy Value:	Min 27J at -20°C (X52/L360) Min 45J at -40°C (X65/L450)	Min 45J at -40°C	Min 41J at -40°C
Heat Treatment:	TMCP	TMCP	TMCP



High Yield Offshore Plates

(API / EN / Norsok)

Thickness (mm)	Width x Length (mm)				
8	2050 x 12000	2438 x 9144	2500 x 12000		3050 x 12000
10	2050 x 12000	2438 x 9144	2500 x 12000	3050 x 9144	3050 x 12000
12	2050 x 12000	2438 x 9144	2500 x 12000	3050 x 9144	3050 x 12000
15	2050 x 12000		2500 x 12000		3050 x 12000
16	2050 x 12000	2438 x 9144	2500 x 12000	3050 x 9144	3050 x 12000
18	2050 x 12000		2500 x 12000		3050 x 12000
20	2050 x 12000	2438 x 9144	2500 x 12000	3050 x 9144	3050 x 12000
25	2050 x 12000	2438 x 9144	2500 x 12000	3050 x 9144	3050 x 12000
30	2050 x 12000	2438 x 9144	2500 x 12000	3050 x 9144	3050 x 12000
32		2438 x 9144		3050 x 9144	3050 x 12000
35	2050 x 12000	2438 x 9144	2500 x 12000	3050 x 9144	3050 x 12000
40	2050 x 12000	2438 x 9144	2500 x 12000	3050 x 9144	3050 x 12000
45	2050 x 12000	2438 x 9144	2500 x 12000	3050 x 9144	3050 x 12000
50	2050 x 12000	2438 x 9144	2500 x 12000	3050 x 9144	3050 x 12000
55		2438 x 9144	2500 x 12000	3050 x 9144	3050 x 12000
60	2050 x 12000	2438 x 9144	2500 x 12000	3050 x 9144	3050 x 12000
65			2500 x 12000		3050 x 12000
70	2050 x 12000	2438 x 9144	2500 x 12000		3050 x 12000
75		2438 x 9144	2500 x 12000		3050 x 12000
80	2050 x 12000				
85			2500 x 12000		3050 x 10000
90	2050 x 12000				3050 x 9000
100	2050 x 12000		2500 x 10000		3050 x 8000
110	2050 x 11000				
120	2050 x 10500		2500 x 8500		3050 x 7000
130	2050 x 10000		2500 x 8000		3050 x 6500
140	2050 x 9000		2500 x 7500		3050 x 6000
150	2050 x 8000		2500 x 7000		3050 x 5500

Supply Condition

Origin	ArcelorMittal Europe – Flat Products (Spain) Voestalpine Grobblech (Austria) Nippon Steel & Sumitomo Metal Corporation (Japan) Dillinger Hütte GTS (Germany) POSCO (Korea)		
Specification:	API	EN	Norsok
	2W Gr 50	10225/S355 G10+M/N 10025/S355 ML	M-120 MDS-Y20
	2W Gr 60	10225/S420 G2+M 10025/S420ML	M-120 MDS-Y30
	2H Gr 50	10225/S460 G2+M 10025/S460 ML	M-120 MDS-Y40
Certificate:	EN10204, 3.2 (ABS / Lloyds / DNV)		
Charpy Value:	Min 41J at -40 °C		
Heat Treatment:	TMCP / Normalized		
Through Thickness Properties (TTP):	Included for all plates 15 mm and above		
UT Test:	As per EN 10160 S2E3		



High Yield Offshore Sections

(EN 10225 S355 G11+M, EN 10025 S355ML / Norsok Y26)

Section	kg / mtr
UNP 100	10.6
UNP 120	13.4
UNP 140	16
UNP 160	18.8
UNP 180	22
UNP 200	25.3
UNP 220	29.4
UNP 240	33.2
UNP 260	37.9
UNP 280	41.8
UNP 300	46.2
UNP 320	59.5
UNP 350	60.6
UNP 380	63.1
UNP 400	71.8

Section	kg / mtr
IPE 100	8.1
IPE 120	10.4
IPE 140	12.9
IPE 160	15.8
IPE 180	18.8
IPE 200	22.4
IPE 220	26.2
IPE 240	30.7
IPE 270	36.1
IPE 300	42.2
IPE 330	49.1
IPE 360	57.1
IPE 400	66.3
IPE 450	77.6
IPE 500	90.7
IPE 550	106
IPE 600	122

Section	kg / mtr
HEA 100	16.7
HEA 120	19.9
HEA 140	24.7
HEA 160	30.4
HEA 180	35.5
HEA 200	42.3
HEA 220	50.5
HEA 240	60.3
HEA 260	68.2
HEA 280	76.4
HEA 300	88.3
HEA 320	97.6
HEA 340	105
HEA 360	112
HEA 400	125
HEA 450	140
HEA 500	155
HEA 550	166
HEA 600	178
HEA 650	190
HEA 700	204
HEA 800	224
HEA 900	252
HEA 1000	272

Section	kg / mtr
HEB 100	20.4
HEB 120	26.7
HEB 140	33.7
HEB 160	42.6
HEB 180	51.2
HEB 200	61.3
HEB 220	71.5
HEB 240	83.2
HEB 260	93
HEB 280	103
HEB 300	117
HEB 320	127
HEB 340	134
HEB 360	142
HEB 400	155
HEB 450	171
HEB 500	187
HEB 550	199
HEB 600	212
HEB 650	225
HEB 700	241
HEB 800	262
HEB 900	291
HEB 1000	314

Supply Condition

Origin	ArcelorMittal Long Carbon Europe (Luxembourg)
Specification:	EN 10225/S355 G11+M EN 10025-1 /S355ML Norsok M 120 – MDS Y 26
Certificate:	EN10204, 3.2 (Lloyds / GL)
Charpy Value:	Min 27J at -50°C Min 50J at -40°C (from flange thickness of 25mm)

Note: trading weights are theoretical based on 7.85kg/dm³



Useful Formulas / Conversions

Pipe Weight

$$\frac{(\text{Outside diameter in mm} - \text{Wall thickness in mm}) \times (\text{Wall thickness in mm} \times 3.142 \times 7.85)}{1000} = \frac{\text{kg}}{\text{Meter}}$$

Steel Plate Weight

$$(\text{Thickness in m} \times \text{Width in m} \times \text{Length in m}) \times 7.85 \text{kg/m}^3 = \text{MT} / \text{Pce}$$

Meter to Feet

$$M \times 3.281$$

Inch to MM

$$Y \times 25.4$$

lb/ft to kg/m

$$Y \times 1.4882$$

ksi to N/mm²

$$\text{KSI} \times 6.89$$

Fahrenheit (°F) to Celsius (°C)

$$(\text{°F} - 32) / 1.8$$

Celsius (°C) to Fahrenheit (°F)

$$(\text{°C} \times 1.8) + 32$$

psi to MPa

$$\text{psi} / 145.0377$$

MPa to psi

$$\text{MPa} \times 145.0377$$

Joules to ft.lbf

$$\text{Joules} / 1.3558$$

ft.lbf to Joules

$$\text{ft.lbf} \times 1.3558$$

ksi to MPa

$$\text{ksi} / 0.1450377$$

MPa to N/mm²

$$1 \text{ MPa} = 1 \text{ N/mm}^2$$

Temperature Conversion

Celsius (°C)	Fahrenheit (°F)
20	68
0	32
-10	14
-20	-4
-30	-22
-40	-40
-50	-58
-60	-76
-80	-112

Comparison API 5L: PSL 1 versus PSL 2

The API 5L specification establishes requirements for two product specification levels (PSL 1 and PSL 2)¹. The two PSL designations define different levels of standard technical requirements. The table presented here summarizes the differences between the two levels:

Parameters	PSL 1	PSL 2
Steel grades	A25 - X70	B - X120
Dimensions	10,3 - 2032,0 mm	114,3 - 2032,0 mm
Pipe ends	Plain, threaded, bevelled, prepared for special couplings	Plain (unless otherwise agreed)
Welding process	All	All, except laser
Heat treatments (M,N or Q&T)	Not established	For all grades from B through X120
Chemistry defined	C/Mn/P/S	C/Si/Mn/P/S/V/Nb/Ti/CE ²
Max % C in seamless	0,28% for grades ≥ B	0,24% for N pipes, 0,18 for Q pipes, up to X65
Max % C in welded pipes	0,26% for grade B to X70	0,22% for grade BM to X56M, 0,12% for X60M to X80M
Max % P	0,030% for grade A to X70	0,025% for grade B to X80M/Q
Max % S	0,030% for grade A to X70	0,015% for grade B to X80M/Q
Carbon equivalent	Not required (only on purchaser's demand)	The maximum established for each grade
Maximum yield strength	Not established (minimum specified)	The maximum established for each grade
Maximum tensile stress	Not established (minimum specified)	The maximum established for each grade
Charpy impact test	Not required (only on purchaser's demand)	Required for all grades at a min. of 0°C/32°F
Repair of body by welding	Allowed	Not allowed
Repair of weld by welding	Subject to agreement	Not allowed
Certification	When specified per 10.1.2	Mandatory as per 10.1.3

The above table is extracted from API Specification 5L, 45th Edition.

¹ Our stocks are all specified in (the higher) PSL 2 grade, killed and made according to fine grain practice.

² Carbon mass fraction (of product analysis) equal or less than 0,12%, the carbon equivalent shall be reported as CEpcm.

Note:

- Annexes with specific manufacturing or service requirements
 - Annex B: Qualified manufacturing procedure for PSL 2 pipe
 - Annex H: Sour services PSL 2 pipe
 - Annex J: Offshore services PSL 2 pipe



www.arcelormittal.com/oilandgas

Disclaimer: The information in this brochure has been compiled with the utmost care. Nevertheless, it is for general information purposes only. The use of the information is at the reader's risk. No warranty is implied or expressed by the Projects organization of ArcelorMittal with respect to the use of information this brochure contains. The information in this publication is subject to change or modification without notice. Please contact your regional office for the latest information. The images used in this brochure cannot be used for personal, non-commercial or commercial purposes.

Published in Sept 2016 (Rev 7)